

Property HIGHLIGHTS

\$629,000

5 BED

2/2 BATH

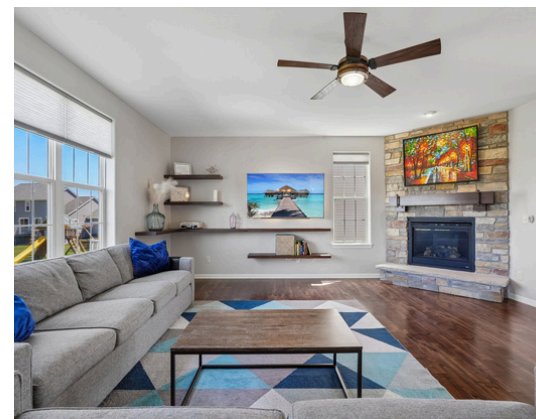
3 CAR

3,235 EST. TOTAL SQ. FT.

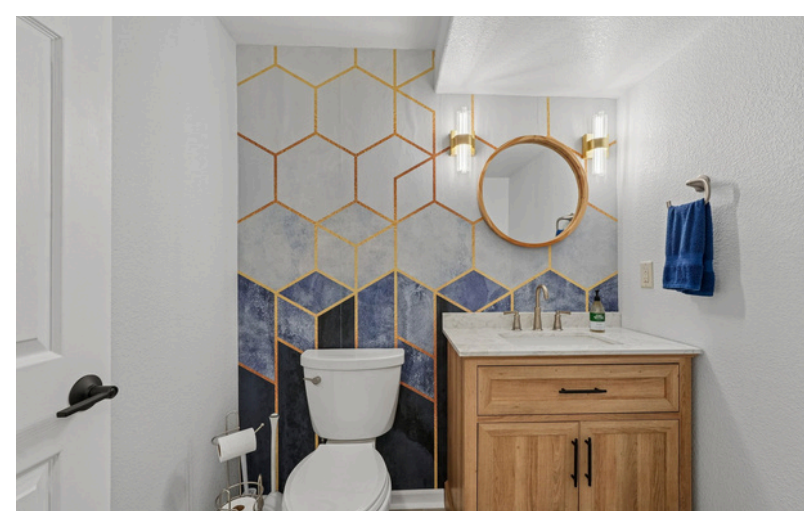
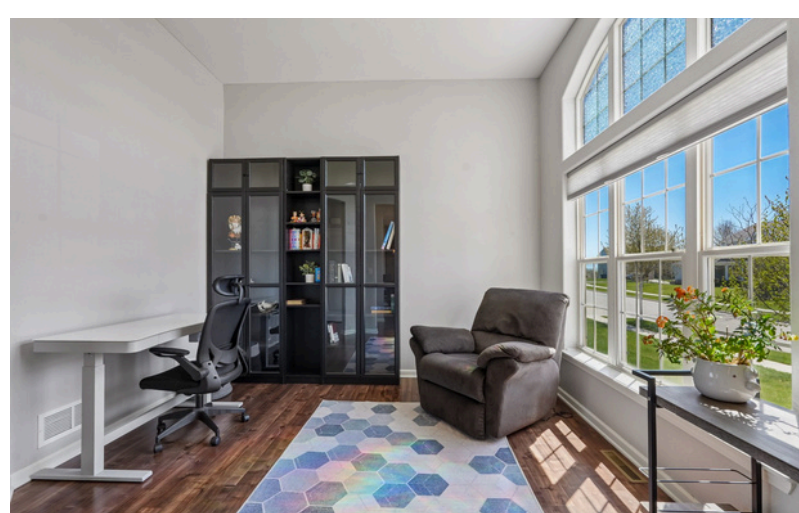
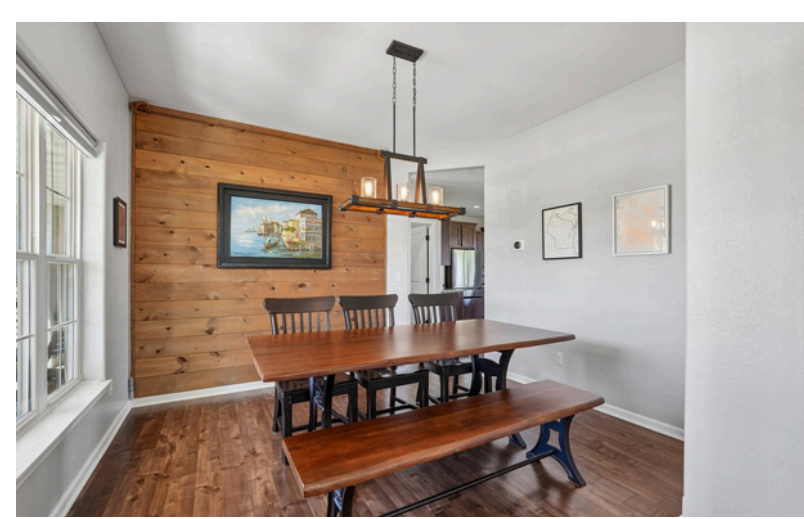
2,310 EST FIN ABOVE SF

925 EST FIN BELOW SF

1842 Windrush Drive, Port Washington



Move-in ready 5 bedroom Colonial in desirable Misty Ridge! This beautifully maintained home features 9 ft ceilings, engineered wood floors, open-concept living, and a stunning great room with stone gas fireplace. Spacious kitchen offers granite countertops, tile backsplash, oversized island, and large pantry. Main floor office with soaring 11 ft ceiling and convenient laundry room. Recently finished lower level includes a rec room/play area, exercise room, half bath, 5th bedroom with closet and egress windows, plus abundant storage. Fenced backyard showcases mature landscaping with hydrangeas, peonies, lilacs, clematis, and more. Near the playground, shopping, Costco, Target, and Ozaukee Interurban Trail.



Judy Huebner

Realtor/Team Leader

262-391-6372

Judy@HouseToHomeTeam.com

www.HouseToHomeTeam.com

